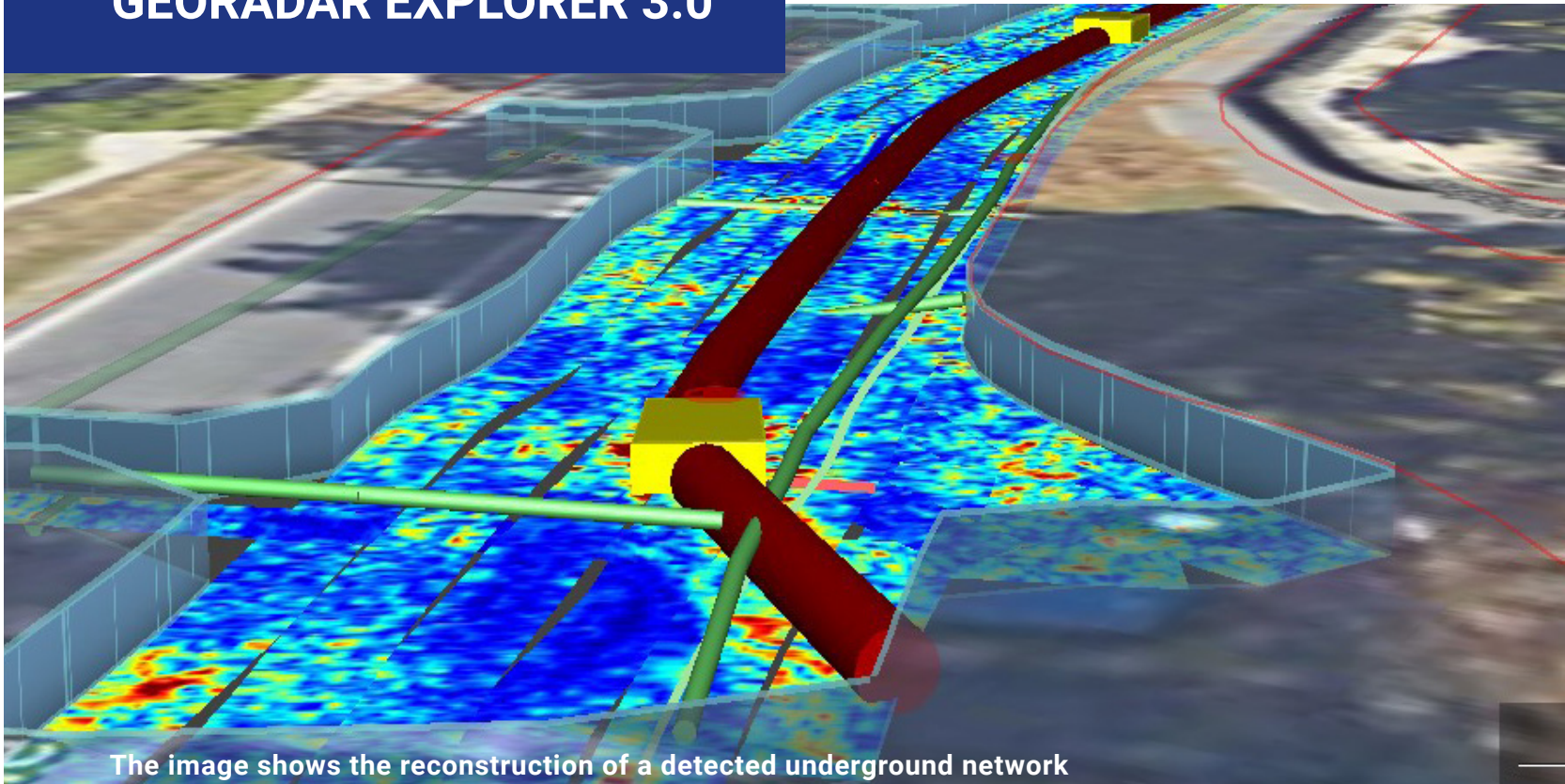


GEORADAR EXPLORER 3.0



The image shows the reconstruction of a detected underground network

Tesmec Georadar Explorer 3.0 is a Ground Probing Radar - GPR - which detects underground utilities, optimizing trenching and laying operations.

This system has been developed to guarantee the safety of trenching work sites and to increase operational speed, avoiding utilities strike incidents. Utilizing Explorer 3.0 reduces risks and costs by providing non destructive surveying to locate underground networks.

The 3.0 system has been reduced in size, making it easier and more practical. The new brackets lock and stabilize the antenna during acquisition, facilitating its movement. All the electronics, including the Control Unit, are inside the antenna box, which has been reduced in size and weight. The new lithium batteries, reduced in size and weight, replace the previous lead - acid batteries and guarantee a longer service life.

TECHNICAL DETAILS

- Reconstruction of any kind of underground networks
- Detection depth: up to - 4,0 m
- Automatic Georeferenced data
- User friendly data acquisition software
- Two configurations: vehicle pulled "mobile" and hand pushed "trolley"
- Trolley configuration acquisition speed: 4.000-5.000 sqm/day
- Mobile configuration acquisition speed: 15.000-20.000 sqm/day



SYSTEM SPECIFICATIONS

METRIC

US

SOFTWARE SPECIFICATIONS

Sensor frequency	600 MHz	600 MHz
Weight	42 KG	92 pounds
Scan width	82.5 cm	32"
Number of channel	30 (19VV - 11HH)	30 (19VV - 11HH)
VV channels spacing	4.3 cm	1.7"
HH channels spacing	7.5 cm	2.9"
Power consumption	120 L	31.7 gal
Acquisition	19 W	19 W
Stand-by	15 W	15 W
Max operating time	8H (can be extended)	8 hrs (can be extended)
Environmental	IP65	Waterproof
Max. acquisition speed	14 km/h	8.7 mph
Temperature range	-20 C° / 50 C°	- 4° F/ 122° F
Scan step resolution	4 cm	1.5 "
Positioning	Integrated Encorder and PPS External GPS and TPS	
Certification	EC, FCC, IC	
Recommended laptop	PANASONIC FZ62	

Umap - Acquisition software

- Automatic calibration for an easy and quick start-up
- Visualization and storage of antenna array data set (30 channels)
- Visualization of radar tomography (time slices)
- Connection with NMEA positioning device
- Multilanguage support
- Metric and imperial units

IQMaps - Processing software

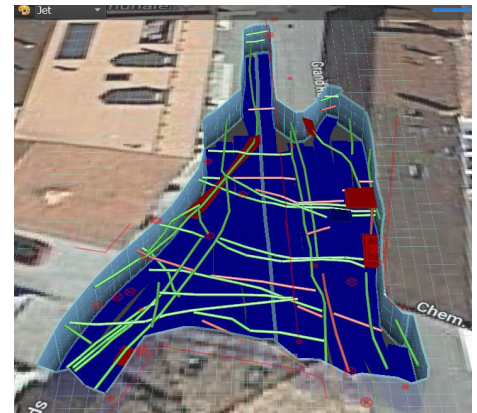
- Automatic calibration for an easy and quick start-up



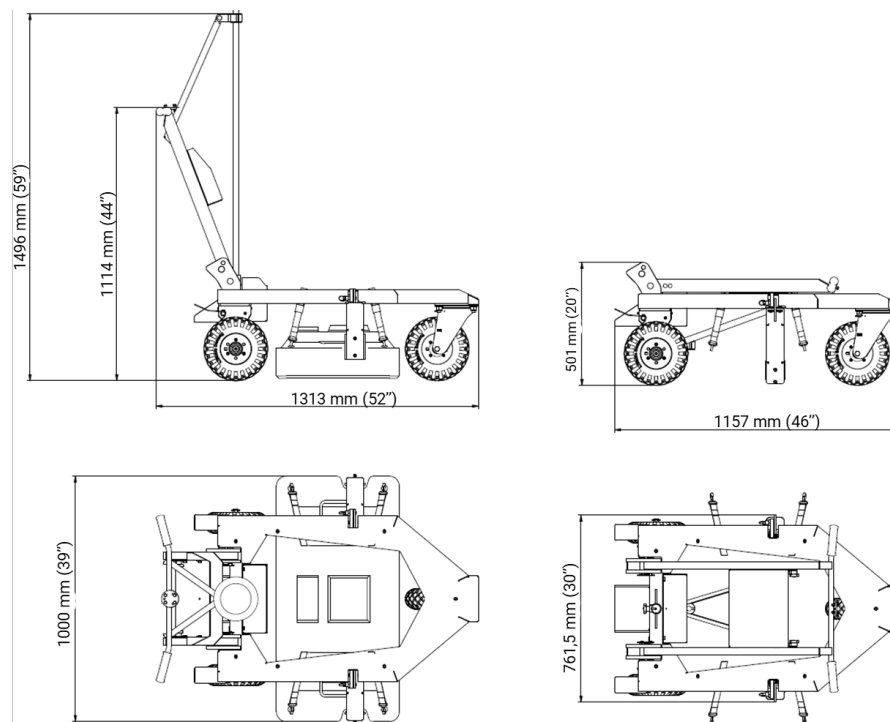
Explorer 3.0 – vehicle pulled in "trolley" configuration



Explorer 3.0 – vehicle pulled in "mobile" configuration



The image shows the reconstruction of a detected underground network



Pictures & drawings can be different according to technical specifications - Updating programme variations without notice are possible