

# 400MCT CS1200



Tesmec 400MCT with CS1200 is a 15 metric ton-class trencher featuring a 238 Hp (175 kW) tier 4 engine/ Stage V, or a 218 Hp (160 kW) tier 3 engine, designed for telecom and energy cables projects in urban and extra-urban areas

## STANDARD FEATURES

**Productivity** Exploit the productivity of 400 MCT tractor and CS1200 chainsaw attachment, with an hydraulic offset of 70 cm (2' 4") from machine centerline either direction, an extra offset kit of max 34 cm (1' 1"), +/- 12° hydraulic tilt (rotation about horizontal axis) and +/- 13° hydraulic pivot (rotation about vertical axis). These are offered as standard together with crumbshoe, TrenchTronic and Re.M.

**Modularity** Enhance 400MCT potential thanks to its modularity. This model is available also with R670 axial wheel, RT1100 tangential wheel and VP1100 vibratory plow, making it the ideal solution for multiple applications.

**Remote controlled** Experience the radio control system, which enables the operator to control the machine remotely, increasing the safety in site, the visibility on the trenching area and on the trenching tool.

## OPTIONAL FEATURES

- Side mounted truck loading conveyor, not foldable and swivelling end
- Reel carrier, rollers and laying box for mechanical laying
- Rubber track pads
- Smart Tracker

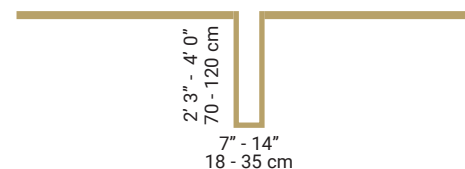
## STATE OF THE ART TECHNOLOGY

**TrenchTronic** Electronic control with operator selectable digging pressure, fully automatic operation, and remote diagnostic system

**Re.M** The remote control with machine data remote monitoring, fleet location management, troubleshooting information and operating conditions

**Smart tracker** Automatically collects as-built data while the machine is trenching, avoiding survey stakeout and achieve the complete digitalization of the jobsite.

## TRENCHING DIMENSIONS



## TRANSPORT DIMENSIONS

	METRIC	US
<b>Lenght</b>	894 cm	29' 4"
with truck loading conveyor	1206 cm	39' 7"
<b>Width</b>	228 cm	7' 6"
with truck loading conveyor	255	8' 4"
<b>Height</b>	261 cm	8' 7"
with truck loading conveyor	289 cm	9' 6"
<b>Weight</b>	14.500 - 15.500 Kg	31.900 - 34.100 lbs
<b>Ground pressure</b>	0.75 - 0.80 kg/cm2	10.6 - 11.3 psi

## ENGINE

	METRIC	US
<b>Model and Max HP (kW)</b>		
Tier 4/Stage V VOLVO TAD583VE	238 HP (175 kW)	
Tier 3 VOLVO TAD552VE	218 HP (160 kW)	
<b>Max no load rpm</b>	1.700 RPM	
<b>Fuel tank capacity</b>	190 L	50.2 gal
<b>Fuel consumption (at full load)</b>		
Tier 4 / Stage V	41.8 L/hr	11.04 gal/hr
Tier 3	44 L/hr	11.62 gal/hr
<b>AD Blue/DEF consumption</b>		
Tier 4 / Stage V	2.59 L/hr	0.68 gal/hr
<b>Cooling rating</b>	54°C ambient air	130°F ambient air
<b>Air cleaner</b>	Power Core	

## TRACKS

	METRIC	US
<b>Track chain type</b>	FL4	
<b>Track lenght</b>	241 cm	7' 11"
<b>Track pad width</b>	40 cm	1' 4"
<b>Track pad type</b>	Triple grouser (single available as option)	
<b>Self-leveling (tilting) undercarriage</b>	20 cm	0' 8"

## CRAWLER DRIVE

	METRIC	US
<b>Drive</b>	Hydraulic open circuit, planetary transmission	
	Full counter rotation	
<b>Infinitely variable speed</b>	Forward and reverse	
Working speed	0 - 1.16 km/h	0 - 0.72 mph
Transfer speed	0 - 2.62 km/h	0 - 1.62 mph
<b>Parking and service brake</b>	Spring applied, hydraulic release, wet disc brake	

## DIGGING DRIVE

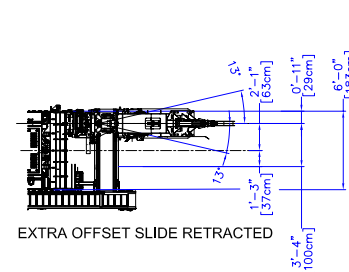
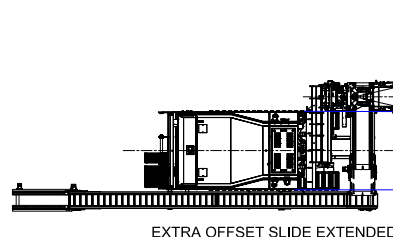
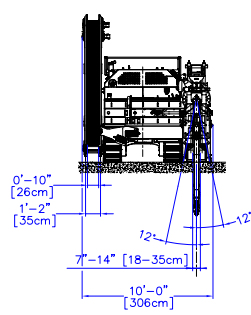
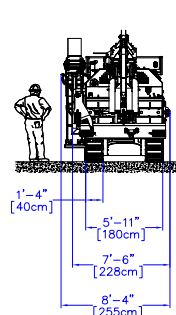
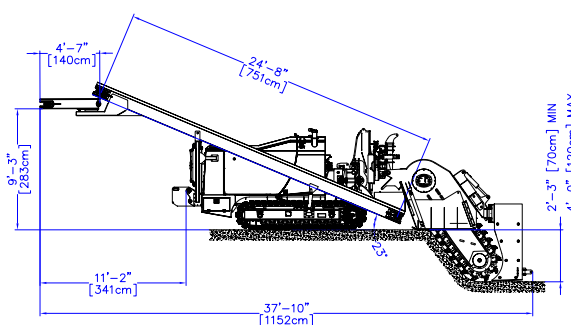
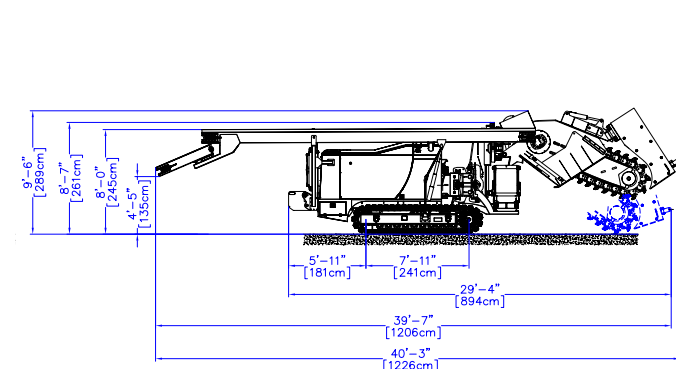
	METRIC	US
<b>Drive</b>	Hydrostatic, one variable displacement pump and one motor	
<b>Digging speed ranges</b>	0 - 192 m/min	0 - 630 fpm
<b>Digging chain</b>	Tesmec single strand with 11.4 cm (4.5") pitch chain, "K" or "M" style	
<b>Cutters</b>	Rotary carbide tipped	
<b>Cutters shank diameter</b>	2.2 cm	7/8"
<b>Cutters gage</b>	5.1 cm	2"

## TRUCK LOADING CONVEYOR

	METRIC	US
<b>Reversible and shiftable</b>	Yes	
<b>Conveyor belt speed</b>	0 - 117 m/min	0 - 385 fpm
<b>Conveyor discharge direction</b>	Right or left	
<b>Conveyor belt width</b>	35 cm	1' 2"
<b>Conveyor lenght</b>	250 cm	8' 3"
<b>Discharge height</b>	74 cm	2' 5"

## TRUCK LOADING CONVEYOR WITH SWIVELING END (OPTIONAL)

	METRIC	US
<b>Conveyor belt speed</b>	0 - 117 m/min	0 - 385 fpm
<b>Conveyor belt width</b>	35 cm	1' 2"
<b>Conveyor lenght</b>	790 cm	25' 11"
<b>Discharge height</b>	300 cm	9' 10"



Rev. 11/24

Pictures & drawings can be different according to technical specifications - Updating programme variations without notice are possible

**TESMEC**  
draw the way forward

in YouTube Instagram Facebook  
www.tesmec.com